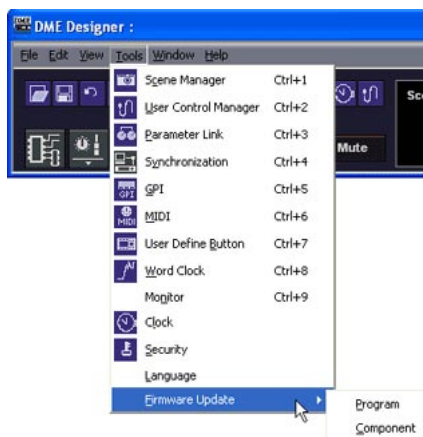


DME 64N/24N Firmware Upgrade Guide

This upgrade guide is mentioned in 95 pages of an online manual of DME Designer.

DME Firmware Update procedure

You can update the DME unit firmware using the [Firmware Update] command on the [Tools] menu. When you move the mouse cursor over the [Firmware] command on the [Tools] menu, a submenu is displayed.



When you select [Program] or [Component] on the submenu, the "Open" dialog box will be displayed. You can perform a firmware update by specifying a firmware update file.

When performing a firmware update, connect the DME unit and the computer, and do the update online.

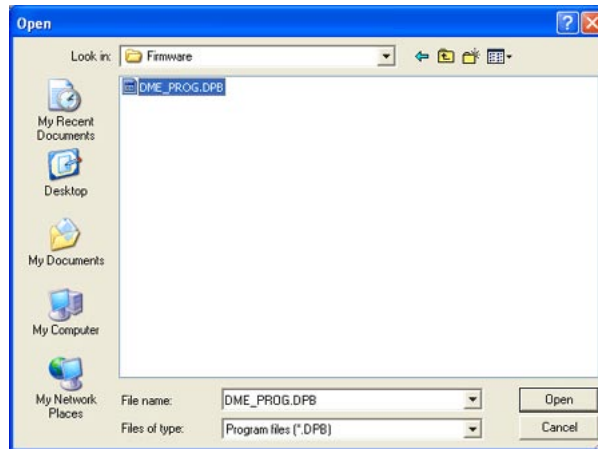
When the DME update is finished, the DME unit will be automatically restarted. You also need to restart DME Designer.

[Program]

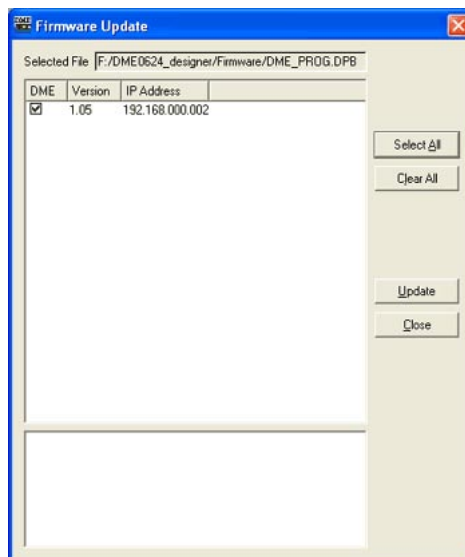
.....

- Updates the DME/CP1 unit program area firmware. Opens update files with the extension ".DPB".

1. Select [Firmware Update] [Program] in the [Tools] menu. The "Open" dialog box will be displayed.



2. Select an update program with the extension ".DPB" and click the [Open] button. The "Firm Update" dialog box will be displayed. The DMEs in the current zone will be displayed in a list.



3. Check the DME you wish to update.

You can click on a checkmark to turn it ON/OFF. The [Select All] button places a checkmark next to all the DMEs. The [Clear All] button turns OFF all the DME checkmarks.

4. Check the DME you wish to update, then click the [Update] button.

The firmware update will begin.

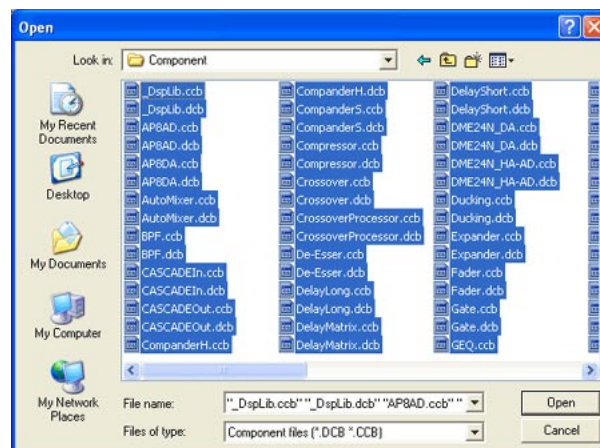
NOTE While updating, be very careful not to disconnect the USB or Ethernet cable or turn off the power to the DME. The DME Designer MIDI setting information will be lost.
When the DME update is finished, the DME unit will be automatically restarted. You also need to restart DME Designer.

[Component]

• Updates the DME unit component firmware. When you select this command, the "Open" dialog box will be displayed. Opens update files with the extension ".DCB" (for DME) or ".CCB" (for ICP1). You can select multiple update files for components.

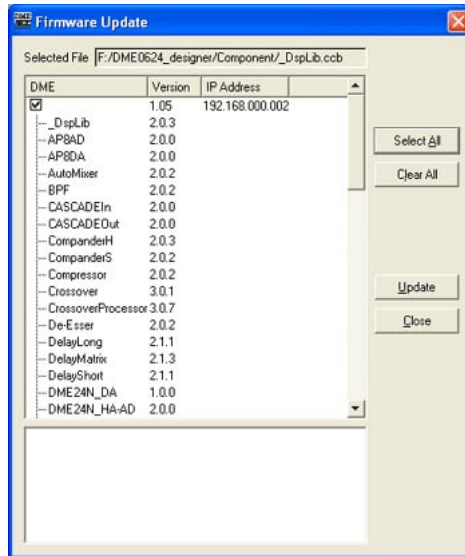
1. Select [Firmware Update] [Component] in the [Tools] menu.

The "Open" dialog box will be displayed.



2. Select an update program with the extension ".DCB" (for DME) or ".CCB" (for ICP1) and click the [Open] button.

The "Firmware Update" dialog box will be displayed. The DMEs or ICPs in the current zone will be displayed in a list. The component names and versions will be displayed hierarchically for each DME.



3. Check the component you wish to update.

You can click on the checkmark to turn it ON/OFF. The [Select All] button places a checkmark next to all the DMEs. The [Clear All] button turns OFF all the DME checkmarks.

4. Check the component you wish to update, then click the [Update] button.

The component update will begin.

NOTE While updating, be very careful not to disconnect the USB or Ethernet cable or turn off the power to the DME. The DME Designer MIDI setting information will be lost. When the DME update is finished, the DME unit will be automatically restarted. You also need to restart DME Designer.